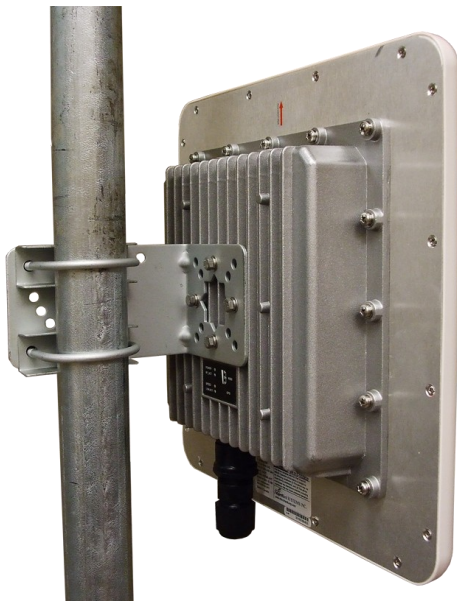


4.9 GHz Public Safety OFDM Broadband Ethernet Bridge

Responding to industry demands for greater speed and throughput, the VIP Series brings long-range wireless network communications to a new performance level. For easy deployment the ANT version of the VIP Series is mounted in a weather resistant antenna enclosure.

Applications

- Public Safety Band
- High-speed Backbone
- IP Video surveillance
- Voice over IP (VoIP)
- Ethernet Wireless Extension
- Legacy Network/Device Migration
- Facilitating Internetwork wireless communications



Features

- Up to 54Mbps data rate
- Power Over Ethernet (POE)
- Weather Resistant Enclosure
- LED Status Indicators
- Adaptive modulation with
- AP may be configured as router
- WDS station bridge
- User-configurable firewall functions
- RADIUS server authentication
- Remote administration
- Quality of service (QoS) support
- Firewall, VPN, VLAN
- Wireless firmware upgrade capable
- Supports 5, 10, 20 MHz Channelization

VIP4900-ANT

Specifications



Frequency Range	4940 - 4990 MHz	Serial Port (optional) Data Port	Serial to Ethernet RS232,R485,RS422
Spread Method	OFDM		Console Port
Modulation	QPSK/16QAM/64QAM	LEDs	
BER	Better than 10 ⁻⁶	Diagnostics	Status: IP/MAC address, RSSI, SNR, TX Power, Frequency, Bandwidth, Alarm, Loopback, BER, RSL, ATPC, Ethernet Statistics, Connection Speed Configuration: IP address, Tx Power, Tx Mute, Frequency, Bandwidth, Alarm, Loopback, BER test/alarm, RSL, ATPC, Loopback test ALARMS: Radio Tx, Radio Rx, BER, RSSI, SNR Diagnostics: BER, Local/Remote/RF Loopback/ RSSI
Receive Sensitivity			
5MHz BW:	13.5 Mbps @ -74dBm 6.0 Mbps @ -86dBm 1.5 Mbps @ -94dBm		
10MHz BW:	27.0 Mbps @ -74dBm 6.0 Mbps @ -86dBm 3.0 Mbps @ -94dBm		
20MHz BW:	54.0 Mbps @ -74dBm 24.0 Mbps @ -86dBm 6.0 Mbps @ -94dBm		
Bandwidth	5MHz, 10MHz, 20MHz (user selectable)	Input Voltage	12-30VDC (POE)
RF Maximum Input	0 dBm	Maximum Power Consumption	1A at 24VDC (24W)
Link Rate	Up to 54Mbps	Ethernet Ports	LAN Ethernet 10/100BaseT IEEE802.3 compliant, (RJ45 Weatherproof) WAN Ethernet (optional) 10/100BaseT IEEE802.3 compliant, (RJ45 Weatherproof)
Output Power	Up to 26dBm		
Encryption	64-bit WEP 128-bit WPA & WPA2 (not available for export outside Canada & USA)	Environmental	-40°F to 185°F (-40°C to +85°C) 5-95% humidity, non-condensing
Range	10 miles @ 18 Mbps 30 miles @ 6 Mbps	Weight	Approx. 2.5kg
Rejection	Double Conversions Super heterodyne type rejection performance	Dimensions	Approx. 305mm x 305mm x 70mm
Operating Modes	Access Point, Station, Repeater, Adhoc, Mesh	Approvals	FCC Part 90Y Industry Canada
Topology	Point to Point, Point to Multipoint, Peer to Peer, Repeater	Order Options	
Network Protocols	TCP, UDP, TCP/IP, ARP, ICMP, DHCP, HTTP, SNMP, FTP, Serial over IP, QoS, VoIP, VLAN	- 100	Second Ethernet Connector—WAN
Management Local & Remote	Telnet, HTTP, HTTPS, FTP, TFTP, SNMP V1,V2,V3		

Contact Information

Copyright 2011 Microhard Systems Inc.
Specifications subject to change without notice.

Microhard Systems Inc.
150 Country Hills Landing N.W.
Calgary, AB, Canada T3K 5P3

Email: info@microhardcorp.com
Tel: (403) 248-0028
Fax: (403) 248-2762



www.microhardcorp.com