

MIMO5800

MIMO 5 GHz OFDM Broadband Ethernet Bridge / Serial Gateway

The MIMO5800 is a Ruggedized High Power 300Mbps Broadband Ethernet Bridge & RS232/485/422 Serial Gateway. Simultaneously supporting high bandwidth backhaul, dual Ethernet ports, and integrated serial port capabilities, the MIMO5800 brings forth a complete solution at a whole new performance level. Built using a robust & rugged design for harsh environments, the MIMO5800 can excel in any application!

Up to 300 Mbps

802.11a/n

Enhanced Firewall

Extended Temperature

Dual Ethernet

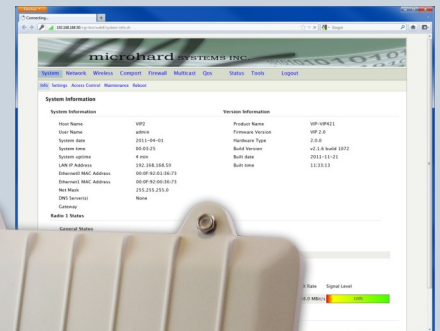
RS232/485/422 Port



Features

- Up to 300 Mbps Link Rate
- High Power Backhaul with 802.11a, 5,10,20,40 MHz Channels
- Firewall with ACL Security, Port Forwarding
- Access Point, Repeater, and Client/Station, MESH modes , Subscriber Roaming
- Serial Gateway (RS232/RS485/RS422)
- RSSI LEDS / ANT Alignment
- TDMA / WOPR Protocol
- Comprehensive VLAN & QoS, Spanning Tree
- Dual Ethernet ports (WAN/LAN)
- Wide operating temperature (-40°C to +85°C)
- Remote administration via local console, telnet, web browser GUI and SNMP

Powerful User Interface



IP67 Outdoor Enclosure

◆ MESH ◆ Serial/RS485 ◆ 802.11a/n ◆ Ethernet ◆ Firewall

MIMO5800

Specifications

Frequency	5.150 - 5.850 GHz	Network Advanced Protocols	IP Routing - static Routing, IP/RIPv1 (RFC1058) IP/RIPv2 (RFC1388), CIDR (RFC1519), ICMP (RFC791), ARP(RFC826) NAT and Port Forwarding (Routing mode only) PPPoE Client (Routing mode only) PPTP for VPNs Network 802.1d Spanning Tree Protocol DHCP Server, Relay, and Client / DHCP Server Reservation Bidirectional Control Bandwidth Control Full 802.1Q VLAN Support Proprietary Long Distance Algorithm for ACK and CTS timeout adjustment support Firewall and Packet/URL Filtering (Routing mode only) Multicast Routing support
Spread Method	OFDM/QPSK/16QAM/64QAM		
Radio Operation	IEEE 802.11a/n		
Link Rate	Up to 300Mbps		
Bandwidth	5MHz, 10MHz, 20MHz, 40 MHz		
Error Detection	ARQ		
Encryption	WEP,WPA, WPA2 MAC Authentication, RADIUS Server, MAC Blocking		
Range	Up to 10 miles (16 km) (Antenna Dependant)		
Sensitivity (excluding ANT GAIN)	802.11a: -96dBm@6Mbps -79dBm@54Mbps 802.11an HT20: -95dBm@MCS0, -74dBm@MCS1 802.11an HT40: -92dBm@MCS0, -74dBm@MCS1		
Output Power	Up to 30dBm (1W)		
Ports	Serial Data RS232: RxD, TxD, RTS, CTS, DCD, DSR, DTR RS422: Tx+, Tx-, Rx+, Rx- RS485: 4-wire/2-wire 300bps to 921kbps Serial Console RS232: RxD, TxD LAN/WAN Ethernet 10/100BaseT IEEE802.3	Environmental	-40°F to 185°F (-40°C to +85°C) 5-95% humidity, non-condensing
Network Protocols	TCP, UDP, TCP/IP, ARP, ICMP, DHCP, HTTP, SNMP, FTP, Serial over IP, QoS, VoIP	Weight	Standard: Approx. 395g Outdoor: Approx. 1245g
Operating Modes	Access Point, Client, Repeater, Mesh	Dimensions	Approx. 5.65" x 3.72" x 1.20" (145mm x 95mm x 30mm) Outdoor: 8.5" x 7.0" x 2.0"
Management	Local Serial Port Console, Telnet, WebUI, SNMP, FTP Upgrade, RADIUS authentication, TFTP, CLI	Approvals	FCC Part 15.247 IC RSS210
Diagnostics	Remote Diagnostics, Monitor Utilities (Ping, ARP table, Bridge Table, DHCP active leases, CCQ), Link Test	Order Options	
Rejection	Excellent strong signal interference & rejection characteristics	-C1D2	Class 1 Div 2 (for use in hazardous environments)
Input Voltage	Standard: 9-30VDC Outdoor: 12-30VDC (POE)	-IP67	Outdoor weatherproof enclosure

Contact Information

Microhard Systems Inc.
150 Country Hills Landing N.W.
Calgary, AB, Canada T3K 5P3

Email: info@microhardcorp.com
Tel: (403) 248-0028
Fax: (403) 248-2762

Copyright 2012 Microhard Systems Inc.
Specifications subject to change without notice.

